

# Test Report

Report No. SCL01H079405001

Page 1 of 7

**Applicant** DONGGUAN CITY FENGGANG YUECHENG THE PLASTIC PRODUCTS FACTORY

**Address** 2/F BUILDING F, ZHIHONG SCIENCE & TECHNOLOGY PARK, NO.1 ROAD  
DONGSHENG INDUSTRIAL, HUANGDONG, FENGGANG, DONGGUAN,  
GUANGDONG

**The following sample(s) and sample information was/were submitted and identified by/on the behalf of the client**

Sample Name 932 CASE  
Color Red Brown  
Material PA66  
Sample Received Date Sep. 14, 2015  
Testing Period Sep. 14, 2015 to Sep. 17, 2015

**Test Requested** As specified by client, to test Lead(Pb), Cadmium(Cd), Mercury(Hg), Hexavalent Chromium(Cr(VI)), Polybrominated Biphenyls(PBBs), Polybrominated Diphenyl Ethers(PBDEs), Phthalates(DBP, BBP, DEHP, DIBP), Fluorine(F), Chlorine(Cl), Bromine(Br), Iodine(I) in the submitted sample(s).

**Test Method/ Test Result(s)** Please refer to the following page(s).

Tested by

*Jerry*

Reviewed by

*Cathy*

Approved by

*Danny Liu*

Date

Sep. 17, 2015

Danny Liu

Technical Manager

No. R185010786

Centre Testing International Group Co., Ltd. Hongwei Industrial Zone, Bao'an 70 District, Shenzhen, Guangdong, China

Report Seal

# Test Report

Report No. SCL01H079405001

Page 2 of 7

## Test Method

Tested Item(s)	Test Method	Measured Equipment(s)
Lead(Pb)	IEC 62321-5:2013 Ed.1.0	ICP-OES
Cadmium(Cd)	IEC 62321-5:2013 Ed.1.0	ICP-OES
Mercury(Hg)	IEC 62321-4:2013 Ed.1.0	ICP-OES
Hexavalent Chromium(Cr(VI))	IEC 62321:2008 Ed.1 Annex C	UV-Vis
Polybrominated Biphenyls(PBBs)	IEC 62321:2008 Ed.1 Annex A	GC-MS
Polybrominated Diphenyl Ethers (PBDEs)	IEC 62321:2008 Ed.1 Annex A	GC-MS
Phthalates(DBP, BBP, DEHP, DIBP)	Refer to EN 14372:2004(E)	GC-MS
Fluorine (F)	Refer to BS EN 14582:2007	IC
Chlorine (Cl)	Refer to BS EN 14582:2007	IC
Bromine (Br)	Refer to BS EN 14582:2007	IC
Iodine (I)	Refer to BS EN 14582:2007	IC

## Test Result(s)

Tested Item(s)	Result	MDL
Lead (Pb) *	N.D.	2 mg/kg
Cadmium (Cd) *	N.D.	2 mg/kg
Mercury (Hg) *	N.D.	2 mg/kg
Hexavalent Chromium (Cr(VI)) *	N.D.	2 mg/kg

# Test Report

Report No. SCL01H079405001

Page 3 of 7

## Test Result(s)

Tested Item(s)	Result	MDL
<b>Polybrominated Biphenyls(PBBs) *</b>		
Monobromobiphenyl	N.D.	5 mg/kg
Dibromobiphenyl	N.D.	5 mg/kg
Tribromobiphenyl	N.D.	5 mg/kg
Tetrabromobiphenyl	N.D.	5 mg/kg
Pentabromobiphenyl	N.D.	5 mg/kg
Hexabromobiphenyl	N.D.	5 mg/kg
Heptabromobiphenyl	N.D.	5 mg/kg
Octabromobiphenyl	N.D.	5 mg/kg
Nonabromobiphenyl	N.D.	5 mg/kg
Decabromobiphenyl	N.D.	5 mg/kg
<b>Polybrominated Diphenyl Ethers(PBDEs) *</b>		
Monobromodiphenyl ether	N.D.	5 mg/kg
Dibromodiphenyl ether	N.D.	5 mg/kg
Tribromodiphenyl ether	N.D.	5 mg/kg
Tetrabromodiphenyl ether	N.D.	5 mg/kg
Pentabromodiphenyl ether	N.D.	5 mg/kg
Hexabromodiphenyl ether	N.D.	5 mg/kg
Heptabromodiphenyl ether	N.D.	5 mg/kg
Octabromodiphenyl ether	N.D.	5 mg/kg
Nonabromodiphenyl ether	N.D.	5 mg/kg
Decabromodiphenyl ether	N.D.	5 mg/kg
<b>Phthalates</b>		
Dibutyl phthalate(DBP) CAS#:84-74-2	N.D.	50 mg/kg
Benzylbutyl phthalate(BBP) CAS#:85-68-7	N.D.	50 mg/kg
Di-2-ethylhexyl phthalate(DEHP) CAS#:117-81-7	N.D.	50 mg/kg
Diisobutyl phthalate(DIBP) CAS#:84-69-5	N.D.	50 mg/kg

# Test Report

Report No. SCL01H079405001

Page 4 of 7

## Test Result(s)

Tested Item(s)	Result	MDL
<b>Halogen(s) *</b>		
Fluorine (F)	N.D.	10 mg/kg
Chlorine (Cl)	N.D.	10 mg/kg
Bromine (Br)	N.D.	10 mg/kg
Iodine (I)	N.D.	10 mg/kg

**Tested Sample/Part Description** Brown-red plastic

**Remark:** The sample(s) had been dissolved totally tested for Lead, Cadmium, Mercury.

-MDL = Method Detection Limit

-N.D. = Not Detected (<MDL)

-mg/kg = ppm = parts per million

-\*=The test result(s) is/are presented in reference to the result(s) that reported in SCL01H077823001C.

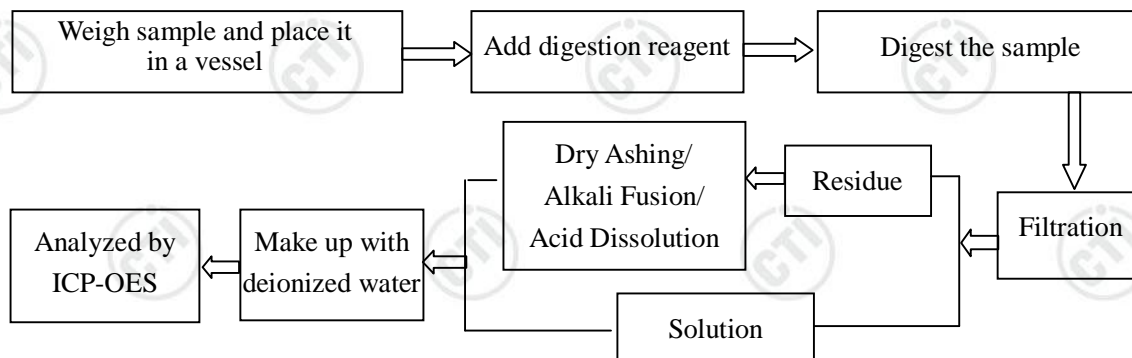
# Test Report

Report No. SCL01H079405001

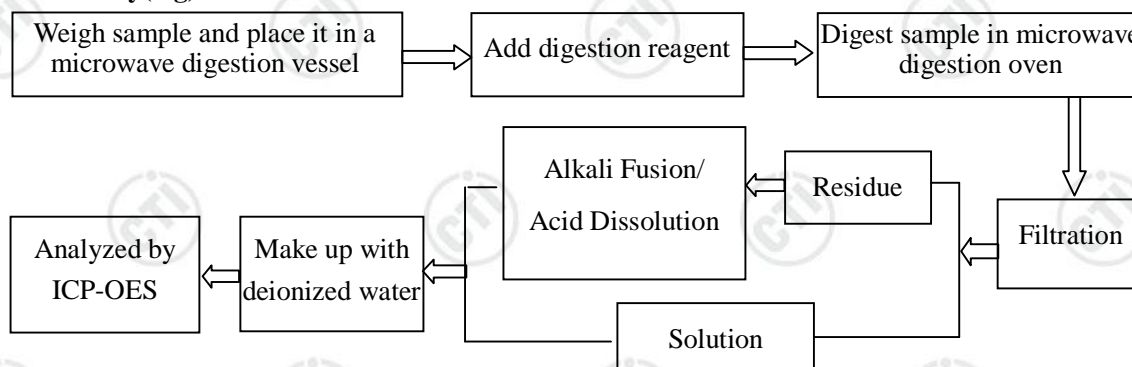
Page 5 of 7

## Test Process

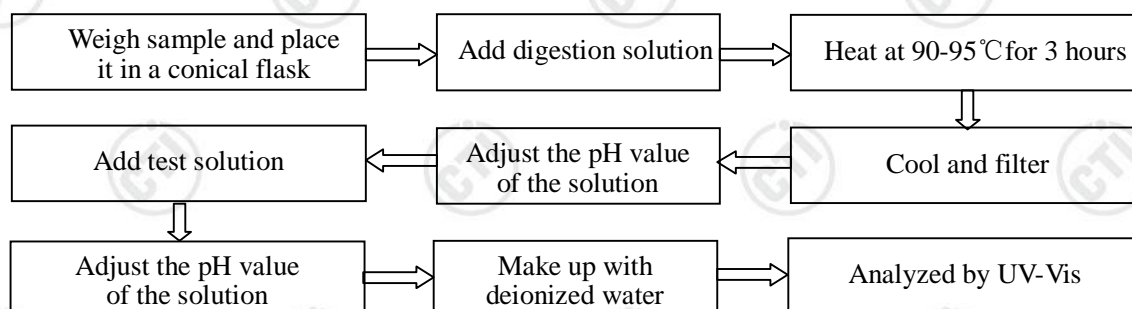
### 1. Lead(Pb), Cadmium(Cd)



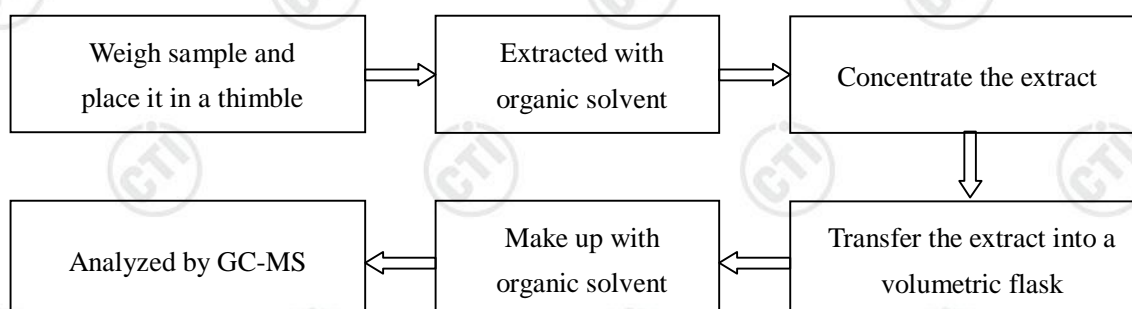
### 2. Mercury(Hg)



### 3. Hexavalent Chromium (Cr(VI))



### 4. Polybrominated Biphenyls(PBBs), Polybrominated Diphenyl Ethers(PBDEs)



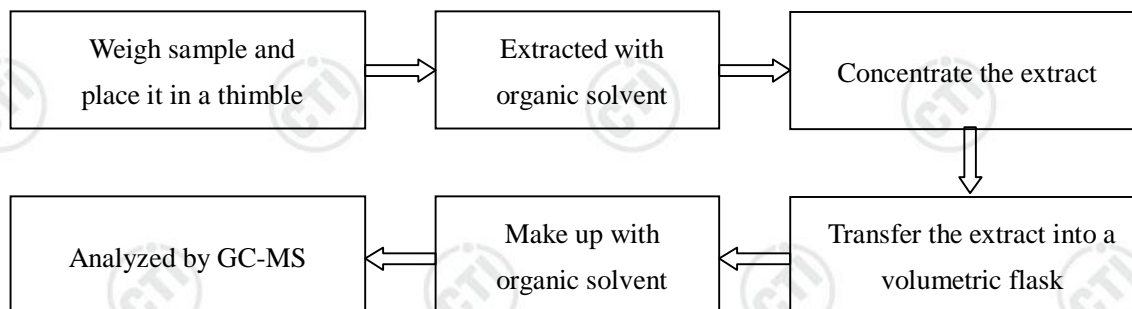


# Test Report

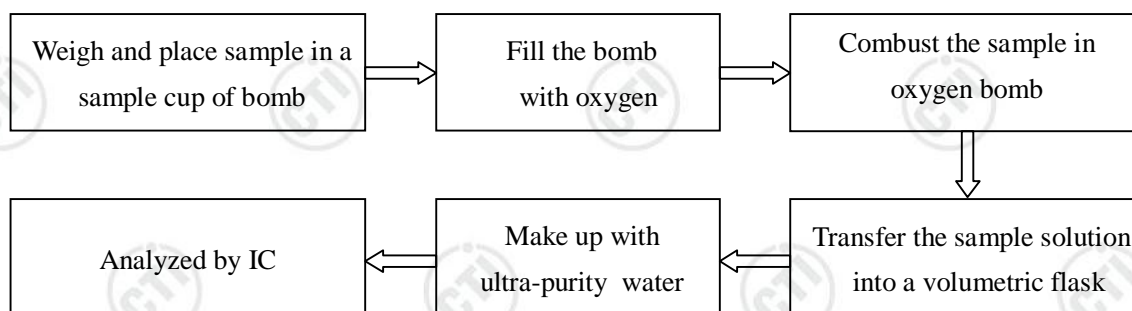
Report No. SCL01H079405001

Page 6 of 7

## 5. Phthalates(DBP, BBP, DEHP, DIBP)



## 6. Fluorine(F), Chlorine(Cl), Bromine(Br), Iodine(I)

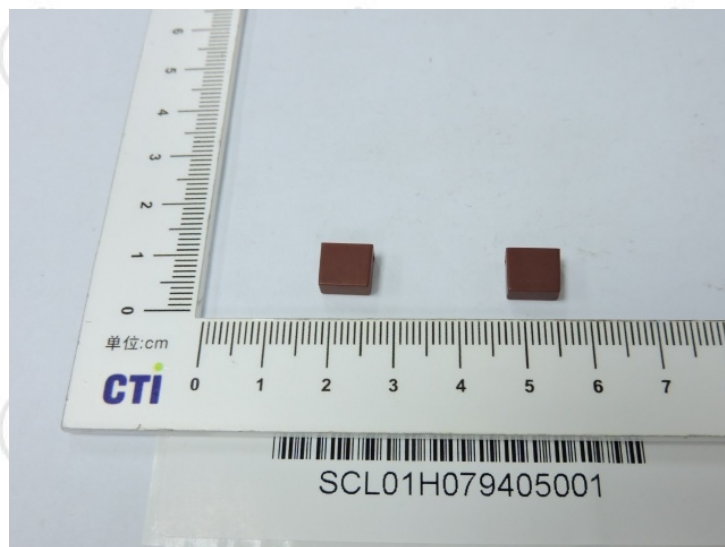


# Test Report

Report No. SCL01H079405001

Page 7 of 7

## Photo(s) of the sample(s)



\*\*\* End of Report \*\*\*

The test report is effective only with both signature and specialized stamp. The result(s) shown in this report refer only to the sample(s) tested. Without written approval of CTI, this report can't be reproduced except in full.